

PASCAL

Tube ø100 and 133 for industrial atmospheres

LiTETime
LED Innovation Technology & Engineering



Sammode



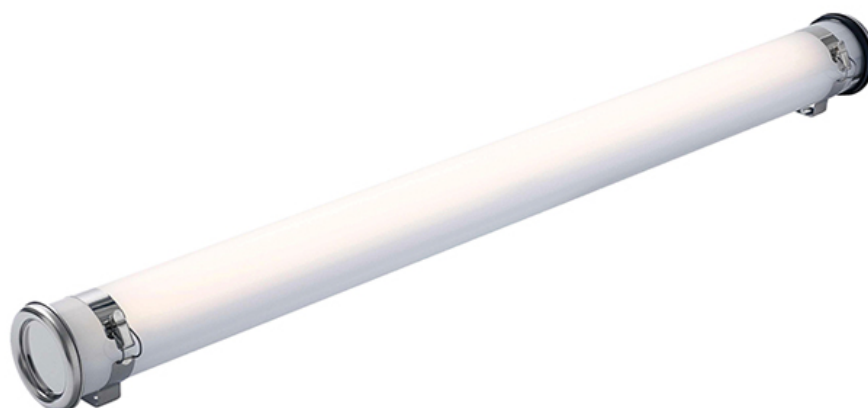
PASCAL

Tube ø100 and 133 for industrial atmospheres

LiTETime
LED Innovation Technology & Engineering



Sammode



The essential tube light for demanding environments, the PASCAL is conceived to be simple and scalable, thanks to its patented sliding gear tray. Resistant to corrosive agents thanks to its stainless-steel parts and its co-extruded composite shade, it perfectly matches the hygiene requirements of a food industry site. Efficient and resistant to UV rays, it can be counted on for the long-term lighting of any type of indoor or outdoor infrastructure. Robustness and reliability guaranteed for 8 years, even in intensive use: a unique promise for a unique product!



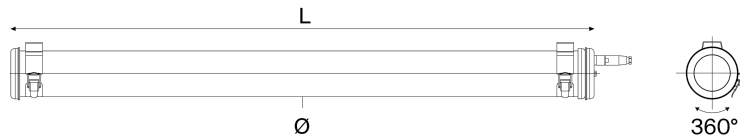


PASCAL

Tube ø100 and 133 for industrial atmospheres



Sammode



Disconnectable quick-lock plug version

CRI80, 4000K



Ø (mm)	Flux (lm)	L (mm)	Designation	Code	Watt
100	1850	708	PAS100 12H840 POME PS3 SA BRS	41605095	16
	2775	1018	PAS100 13H840 POME PS3 SA BRS	41605023	23
	3700	1318	PAS100 14H840 POME PS3 SA BRS	41605022	30
	4625	1618	PAS100 15H840 POME PS3 SA BRS	41605119	38
	5550	1850	PAS100 16H840 POME PS3 SA BRS	41605116	45
133	5550	995	PAS133 23H840 POME PS3 SA BRS	22605031	46
	7400	1295	PAS133 24H840 POME PS3 SA BRS	22605043	61
	9250	1595	PAS133 25H840 POME PS3 SA BRS	22605082	75
	11100	1850	PAS133 26H840 POME PS3 SA BRS	22605066	90

An easy-to-install, repairable and scalable model thanks to an internal sliding and removable plate (Slide© system).

Polyamide cable gland version

CRI80, 4000K

Ø (mm)	Flux (lm)	L (mm)	Designation	Code	Watt
100	1850	708	PAS100 12H840 POME 113 SA BRS	41605036	16
	2775	1018	PAS100 13H840 POME 113 SA BRS	41605037	23
	3700	1318	PAS100 14H840 POME 113 SA BRS	41605038	30
	4625	1618	PAS100 15H840 POME 113 SA BRS	41605039	38
	5550	1850	PAS100 16H840 POME 113 SA BRS	41605040	45
133	5550	995	PAS133 23H840 POME 113 SA BRS	22605120	46
	7400	1295	PAS133 24H840 POME 113 SA BRS	22605054	61
	9250	1595	PAS133 25H840 POME 113 SA BRS	22605127	75
	11100	1850	PAS133 26H840 POME 113 SA BRS	22605144	90

An easy-to-install, repairable and scalable model thanks to an internal sliding and removable plate (Slide© system).

Options

Cable entry	Disconnectable plugs	Color temperature
		3000K 830 4000K 840 5000K 850
1 cable gland	IP68/69K quick-lock plug with threaded ring (capacity: Ø8 to 10 mm)	Lighting management
Polyamide capacity Ø5-12mm 113	PS3	Electronic gear unit for DALI dimming RD
Polyamide capacity Ø7-14mm 116		Electronic gear unit for push button RS
Nickel-coated brass capacity Ø5-14 mm 113LN	Fixing straps	Switch-off warning function (for sensor/timer) RC
2 cable glands including one blind plug	Reinforced fixing straps	Built-in presence sensor (length increased by 85mm) SI
	Reinforced fixing straps with HSHC screw	
Polyamide capacity Ø5-12mm 213	Materials	Emergency lighting
Polyamide capacity Ø7-14mm 216	Polycarbonate housing	PO 3h Self contained Emergency Lighting Long life time LiFePO4 battery (for length ≥ 995 mm) S3H
Nickel-coated brass capacity Ø5-14 mm 213LN	Coextruded polycarbonate/ PMMA housing with High chemical resistance	POME Tmax=30°C
	End caps & fixing straps 304L stainless steel	-
	End caps & fixing straps 316L stainless steel	MR

Accessories

To be ordered separately

IP68 4-outlet junction box	CP00674	
	2 x 20 cm 304L stainless steel extensions	PU44277
	2 x 5 cm 304L stainless steel extensions	PU44278
	Also available in 316L : consult us	
		1m HO7-RNF pre-wired cable 3G1,5²
		Stripped free end
		Wieland® plug IP68/IP69K CAB0080
		(capacity : Ø10-14mm) CAB0095
		Wieland® plug and Y splitter for loop-in/out CAB0145
		Other lengths: consult us



PASCAL

Tube ø100 and 133 for industrial atmospheres

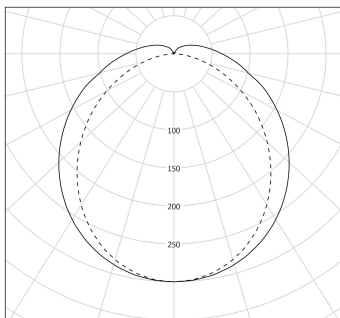


Sammode

Specification

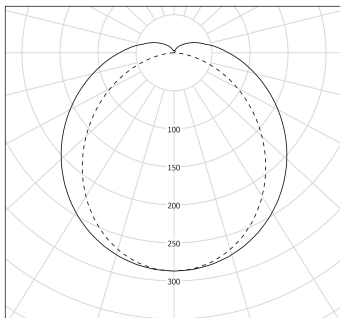


Photometry



cd/klm C0 - C180 --- C90 - C270 $\eta = 100\%$

Diameter 100



cd/klm C0 - C180 --- C90 - C270 $\eta = 100\%$

Diameter 133

Technical characteristics

Light source	High-efficiency removable LED module (CRI>80, 3 SDCM) 70 000 h L80/B10 at max. operating temperature Photobiological hazard : None (RG0)
Optics	Special satin-finish housing for LED
Lighting comfort	UGR \leq 25
Control gear	Constant current driver Electronic compatible with central source
Supply voltage	220-240 V 0/50/60Hz
Electrical class	Class I
Operating temperature	-20°C to +35°C

Easy installation and maintenance

Connection	Version with 3-pole plug : disconnectable plug for Ø 8 to 10 mm cable (3 x 1.5 mm ²) 113 version : polyamide cable gland for cable Ø 5-12 mm, to a 3 x 2,5 mm ² disconnectable terminal block
Mounting	Attachment with 2 bolt-fitted stainless steel straps with variable center distance and 360° orientation
LED engine maintenance	Easily removable LED modules and driver Maintenance by removing the end cap and sliding the guided gear plate (Slide®)

Materials

Housing	Special polycarbonate housing protected from UV, solvents, hydrocarbons and cleaning agents by a coextrusion of PMMA
End caps and fixing straps	304L stainless steel
Gaskets	Peroxide-cured EPDM
Method of construction	Housing in one piece with long-lasting imperviousness

Standards

Waterproofness	IP66, IP68, IP69K
Resistance to IK shocks	IK10
Fire resistance	650°C
Vibration resistance	Meets the severe application requirements of standard EN 60598-1 (tested according to IEC 60068-2-6)

