

## LED HIGHBAY

### Body:

Black painted aluminium sheet

HBO...S – small body – dia 365 mm

HBO...M – medium body – dia 465 mm

### Optic:

Clear PMMA lenses

- EN - 30° – extra narrow beam
- N - 65° – narrow beam
- W - 90° – wide beam

### Application:

One-point suspension assembly

Ceiling surface assembly

### Note:

Standard fittings HBOcan be used up to T max 40°C

Special version HBO../HT can be used up to Ta max 60° C



CrossFire-240



CrossFire-100

$\eta_{ef}$  (lm/W)  
129-132

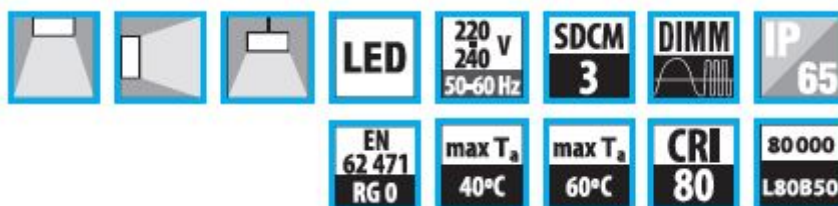


2200	2700	3000	4000	5000	6500	MIX	RGB	
×	×	○	●	○	×	×	×	●
●	×	○	×	×	×	×	×	●

● default

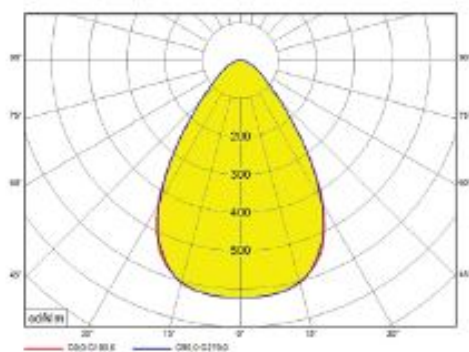
○ optional

× not possible

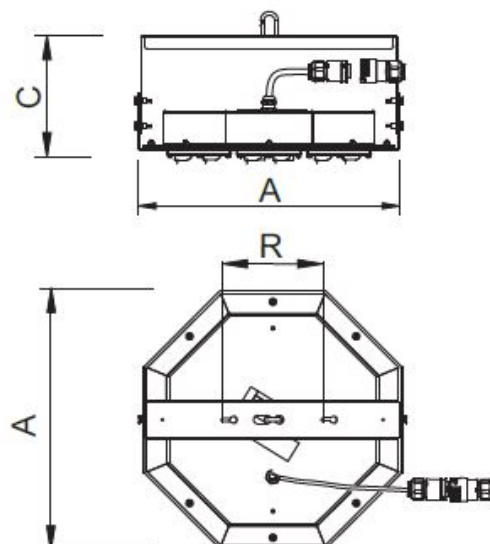




HBO	W	lm	A	C	R	kg
HBO60S3	49	6 400	365	177	140	3,0
HBO100S5	77	10 200				3,2
HBO200M10	155	20 000	435	188		4,5
HBO240M12	185	24 000				4,8



HBO N



**Codes: HBO240M12N4/ND/HT55**

HBO	240	M	12	N	4	/ND	/HT55
Luminaire type							
Light output							
Body size: S – small M – medium							
Nr of LED modules							
Optic: N – narrow beam W – wide beam							
Color temperature 3 = 3000K 4 = 4000K 5 = 5000K							
Driver: ND – no dimmable DALI – dimmable DALI							
Ta - without sign = Ta max 40°C HT 55 - Ta max 55°C							

THE MANUFACTURER CONTINUES TO DEVELOP PRODUCTS THROUGHOUT THEIR LIFETIME. THEREFORE, THE COMPANY RESERVES THE RIGHT TO MODIFY MATERIALS, COMPONENTS, AND TECHNICAL PARAMETERS WITHOUT NOTICE. LUMINOUS OUTPUT AND ELECTRICAL LOAD HAVE AN INITIAL TOLERANCE OF +/- 10 % FROM NOMINAL. FAILURE OF ONE LED LIGHT POINT WITHIN A LUMINAIRE DOES NOT IMPAIR FUNCTIONAL PERFORMANCE AND SO IS NOT CLASSIFIED AS REASON FOR COMPLAINT.