

SURFACED LED LIGHT FIXTURE

Body:
Powder painted non-corrosive high-pressure die-cast aluminium

Optic:
Symetric glare-free optic lens
N - narrow beam 30°
W - wide beam 90°

Application:
Floodlight for both indoor and outdoor application



RH100



RH200



OPTICS

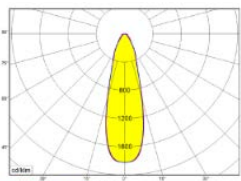


CONNECTOR

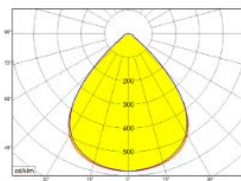


ORIENTABLE MOUNTING

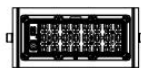
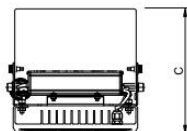
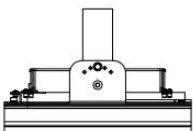
RH	P(W)	Lumen		A	B	C	W (Kg)
		WIDE	NARROW				
RH100	74	9 800	9 600	95mm	200mm	138mm	2
RH200	158	20 500	20 000	300mm		186mm	4,1
RH300	230	30 000	29 300	480mm		206mm	7



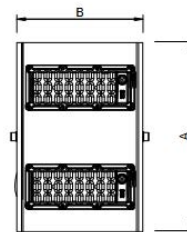
RH N



RH W



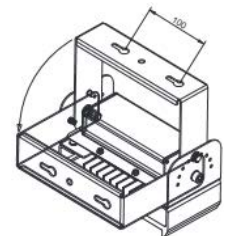
RH 100



RH 200



RH 300



	2200	2700	3000	4000	5000	6500	MIX	RGB	RGBW
ON/OFF	X	X	O	●	O	O	X	X	●
1-10V	X	X	O	X	X	X	X	X	●
DALI	X	X	O	X	X	X	X	X	●
Bluetooth	X	X	O	X	X	X	X	X	●
WiFi	X	X	O	X	X	X	X	X	●
485	X	X	O	X	X	X	X	X	●
RGBW	X	X	O	X	X	X	X	X	●

● default ○ optional X not possible

