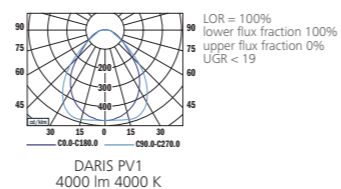


NEW

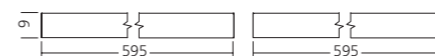
# DARIS MICROPRISMA LED



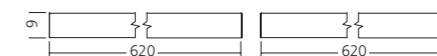
## PHOTOMETRY



PV1



PR1

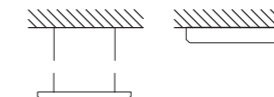


## MOUNTING

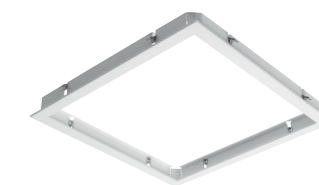
PV CEILING (600 x 600)



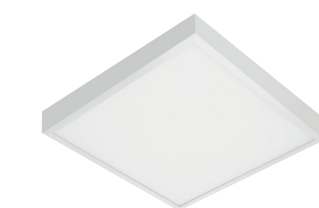
PR CEILING (625 x 625)



FRAME FOR PLASTERBOARD INSTALLATION



FRAME FOR SURFACED INSTALLATION (FOR PV1)



TYPE	NET LUMEN OUTPUT (at Ta = 25°C) (lm)	POWER CONSUMPTION (W)	SYSTEM EFFICACY (lm/W)	COLOUR RENDERING INDEX CRI (Ra)	CORRELATED COLOUR TEMPERATURE CCT (K)	BEAM ANGLE (C0-180, C90-270)	WEIGHT (kg)	ORDER CODE	
								PV1	PR1
DARIS	4000	34	118	80+	4000	85°, 90°	3.8	429001	429002

Luminous flux tolerance +/- 10%

Rope suspension L150

903044

Frame for plasterboard installation PV1

904001

Frame for plasterboard installation PR1

904008

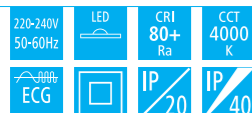
Frame for surfaced installation PV1

905001

Frame for surfaced installation PR1

905002

# Daris



## EN

### Mounting

Ceiling recessed  
PVx/PRx - T-ceiling

### Optical system

Microprismatic diffuser (MCD)

### Wiring

Electronic control gear FIX (ECG)

### Materials

Housing: aluminium  
Diffuser: PS

### Surface finish

Housing: white RAL 9016

### Accessories

Rope suspension  
Frame for plasterboard installation  
Frame for surfaced installation

### Service lifetime

50,000 hours/L70/B50 (ta 25°C)

### Ambient temperature

From -10 °C to +40 °C

## DE

### Montage

Einbauleuchte  
PVx/PRx - Sichtbare T-schiene Decke

### Optisches System

Mikroprismatischer Diffusor (MCD)

### Vorschaltgerät

Elektronisches Vorschaltgerät FIX (ECG)

### Material

Körper: aluminium  
Diffusor: PS

### Oberflächenveredelung

Körper: weiss RAL 9016

### Zubehör

Seilauflhängung  
Rahmen für Gipskarton - Installation  
Rahmen für deckenleuchte Installation

### Lebensdauer

50,000 hours/L70/B50 (ta 25°C)

### Umgebungstemperatur

Von -10 °C bis +40 °C

## FR

### Montage

Plafonnier encastrable  
PVx/PRx - Un faux plafond

### Système optique

Diffuseur microprisme (MCD)

### Équipement électrique

Ballast électronique FIX (ECG)

### Matériels

Corps: aluminium  
Diffusor: PS

### Finition de surface

Corps: blanc RAL 9016

### Accessoires

Câble de suspension  
Cadre pour l'installation de plaques de plâtre  
Cadre pour plafonnier apparent

### Durée de vie utile

50,000 hours/L70/B50 (ta 25°C)

### Température ambiante

De -10 °C à +40 °C

## SK

### Montáž

Vsaďenie  
PVx/PRx - Kazetový strop

### Optický systém

Mikroprizmatický difúzor (MCD)

### Elektrická výbava

Elektronický predradník FIX (ECG)

### Material

Teleso: hliník  
Difúzor: PS

### Povrchová úprava

Teleso: biela RAL 9016

### Príslušenstvo

Lankový záves  
Rám pre montáž do sadrokartónového stropu  
Rám pre prisaďenie

### Servisná životnosť

50,000 hours/L70/B50 (ta 25°C)

### Teplota okolia

Od -10 °C do +40 °C

## ES

### Montaje

Empotradas en el techo  
PVx/PRx - Techo T

### Sistema óptico

Difusor microprismático (MCD)

### Cableado

Equipo de control electrónico FIX (ECG)

### Material

Cuerpo: aluminio  
Difusor: PS

### Tratamiento de la superficie

Cuerpo: blanco RAL 9016

### Accesorios

Cable de suspensión  
Capítulo para la instalación de placas de yeso  
Capítulo para la instalación superficie

### Vida útil

50,000 hours/L70/B50 (ta 25°C)

### Temperatura ambiente

Desde -10 °C a +40 °C

## IT

### Installazione

Ad incasso a soffitto  
PVx/PRx - Struttura in vista

### Sistema ottico

Diffusore microprismatico (MCD)

### Cablaggio

Ballast elettronico FIX (ECG)

### Materiali

Corpo: alluminio  
Diffusore: PS

### Finitura

Corpo: bianco RAL 9016

### Accessori

Cavo di sospensione  
Telaio per l'installazione in cartongesso  
Cornice per l'installazione affiorata

### Durata di vita

50,000 hours/L70/B50 (ta 25°C)

### Temperatura d'ambiente

Da -10 °C a +40 °C

## RU

### Установка

Потолочная встроенная  
PVx/PRx - Кассетный потолок

### Оптическая система

Микропризматический рассеиватель (MCD)

### Электрическое оснащение

Электронный пускорегулирующий аппарат FIX (ECG)

### Материал

Корпус: алюминий  
Рассеиватель: PS

### Отделка поверхности

Корпус: белый RAL 9016

### Аксессуары

Тросовый подвес  
Рамка для установки гипсокартона

### Срок службы

50,000 hours/L70/B50 (ta 25°C)

### Температура окружающей среды

От -10 °C до +40 °C