

# ARENA XL

## LED Industrial Stadium Light

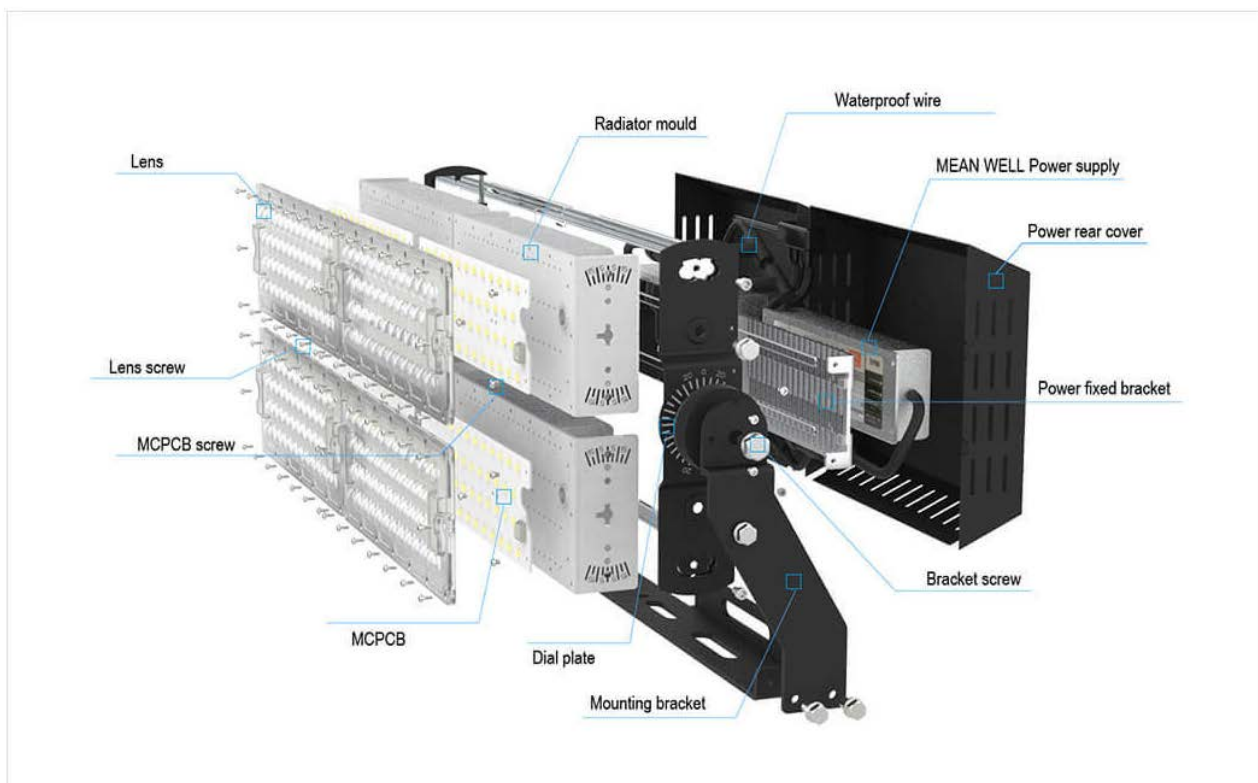


### ◆ PRODUCT PARAMETER





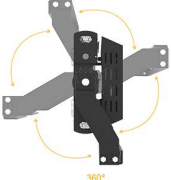

Data Specifications	TFL-B series				
Power	480W	720W	960W	1200W	1440W
Input Voltage	AC100-180V : 384W; AC200-305V : 480W; 50/60Hz	AC100-180V : 576W; AC200-305V : 720W; 50/60Hz	AC100-180V : 768W; AC200-305V : 960W; 50/60Hz	AC100-180V : 960W; AC200-305V : 1200W; 50/60Hz	AC100-180V : 1152W; AC200-305V : 1440W; 50/60Hz
Output Voltage	DC45-48V				
color temperature	4000-4500 /5500-6000K				
CRI	Ra>70 & Ra>80				
Average Beam angle(50%)	8°/20°/40°/60°/90°/120°/140°x100°				
Light Efficiency	whole lamp output 145-155lm/w				
Lumens	480W : 72000lm	720W : 108000lm	960W : 144000lm	1200W : 180000lm	1440W : 216000lm
LED	180pcs(Cree XPG3) for 8° /184pcs(Philips SMD 5050) for 20°,40°/736pcs(Philips SMD 3030) for 60°,90°,120°,140°x100°	270pcs(Cree XPG3) for 8° /276pcs(Philips SMD 5050) for 20°,40°/1104pcs(Philips SMD 3030) for 60°,90°,120°,140°x100°	360pcs(Cree XPG3) for 8° /368pcs(Philips SMD 5050) for 20°,40°/1472pcs(Philips SMD 3030) for 60°,90°,120°,140°x100°	450pcs(Cree XPG3) for 8° /460pcs(Philips SMD 5050) for 20°,40°/1840pcs(Philips SMD 3030) for 60°,90°,120°,140°x100°	540pcs(Cree XPG3) for 8° /552pcs(Philips SMD 5050) for 20°,40°/2208pcs(Philips SMD 3030) for 60°,90°,120°,140°x100°
Driver	MEANWELL ELG-240-48*2	MEANWELL ELG-240-48*3	MEANWELL ELG-240-48*4	MEANWELL ELG-240-48*5	MEANWELL ELG-240-48*6
UGR	20				
Power Factor(Typ)	≥0.95				

Operating Temperature	(-40 ~ 70 °C) (Lowest operation temp -40°C, and highest 70°C)				
Ip rate	the waterproof grade IP65 ,can work outdoor under rain				
Life Span	50000Hrs (L70B50>50,000hrs)				
Main Materials	High purity aluminum+LED+PC lens				
Operating Humidity	20% ~90%				
Storage Temperature	(-40 ~ 80 °C)				
Lumen Maintenance	>85% ( 5000Hrs )				
Others					
Warranty	5 years				
Lux on 5 meter	14523lx (lux at ground from 5m high)	21684lx (lux at ground from 5m high)	29023lx (lux at ground from 5m high)	38872lx (lux at ground from 5m high)	44413lx (lux at ground from 5m high)
Lux on 10 meter	3631lx (lux at ground from 10m high)	5421lx (lux at ground from 10m high)	7256lx (lux at ground from 10m high)	9718lx (lux at ground from 10m high)	11103lx (lux at ground from 10m high)
Temperature on housing Max	60.5°C (Test environment temperature 25 °C )	60.5 °C (Test environment temperature 25 °C )	69.8 °C (Test environment temperature 25 °C )	69.8 °C (Test environment temperature 25 °C )	69.8 °C (Test environment temperature 25 °C )
Temperature on LED Max	66.7°C (Test environment temperature 25 °C )	66.7 °C (Test environment temperature 25 °C )	84.2 °C (Test environment temperature 25 °C )	84.2 °C (Test environment temperature 25 °C )	84.2°C (Test environment temperature 25 °C )
Temperature on Driver Max	52.6°C (Test environment temperature 25 °C )	52.6 °C (Test environment temperature 25 °C )	58.5 °C (Test environment temperature 25 °C )	58.5 °C (Test environment temperature 25 °C )	58.5 °C (Test environment temperature 25 °C )
Net weight	11 Kgs (without package)	13.5 Kgs (without package)	18 Kgs (without package)	27 Kgs (without package)	33 Kgs (without package)
Gross Weight(Kgs)	14 Kgs (with package)	17 Kgs (with package)	21 Kgs (with package)	30 Kgs (with package)	36 Kgs (with package)
Package Size	700x385x175mm	700x515x175mm	700x650x175mm	705x776x175mm	705x910x175mm

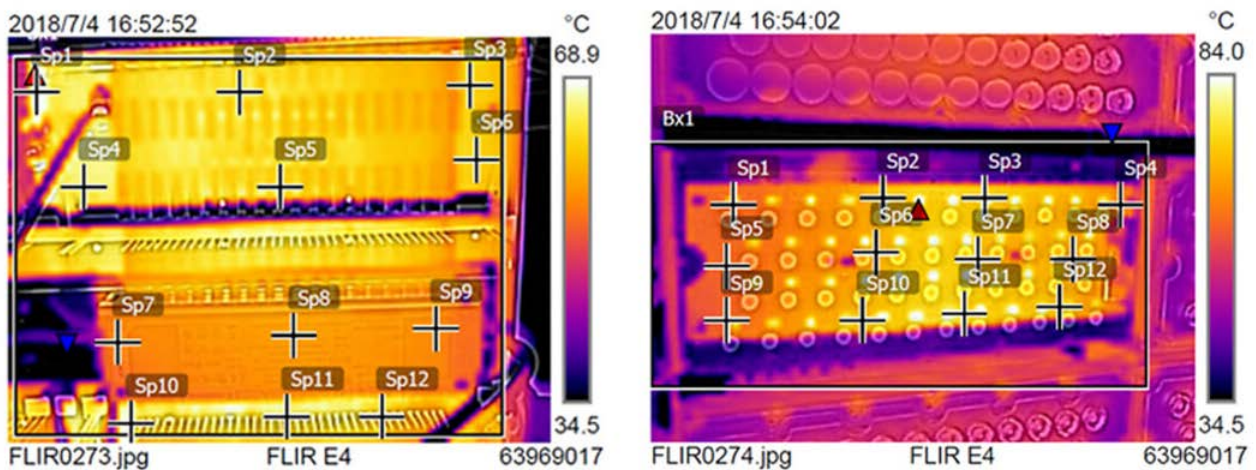
◆ PRODUCT EXPLOSIVE VIEW



◆ PRODUCT DETAILS

	<p><b>NO.1</b></p> <p>Three-dimensional rotary bracket design, horizontal, vertical adjustable with a clear scale table angle adjustable as demands.</p>	<p><b>NO.4</b></p> <p>Adjustable single module can be adjusted up and down.</p>	
<p><b>NO.2</b></p> <p>Dial dial is more accurate and convenient for customers to adjust the angle.</p>			<p><b>NO.5</b></p> <p>Screw lock installation. The single module can be adjusted to adjust the angle 15 degrees to meet the special lighting applications.</p>
	<p><b>NO.3</b></p> <p>Screw lock attached installation, multiple adjustable points enable adjustable angle up to 360 degree.</p>	<p><b>NO.6</b></p> <p>Fins keep same distance between each other and buckle tighten them as a whole. This structure strengthen firmness of fins and maximize heat-dissipate area with minimum weight.</p>	

◆ THERMAL PRESENTATION



The combination of high thermal conductivity materials. The whole lamp is tested by thermal radiation: TFL- 960W-B The lowest operating temperature of the radiator is 35 degrees, the highest temperature is 69 degrees, the lowest operating temperature of the LED light source is 35 degrees, the highest temperature is 84 degrees, the whole product greatly improved the life and stability.