

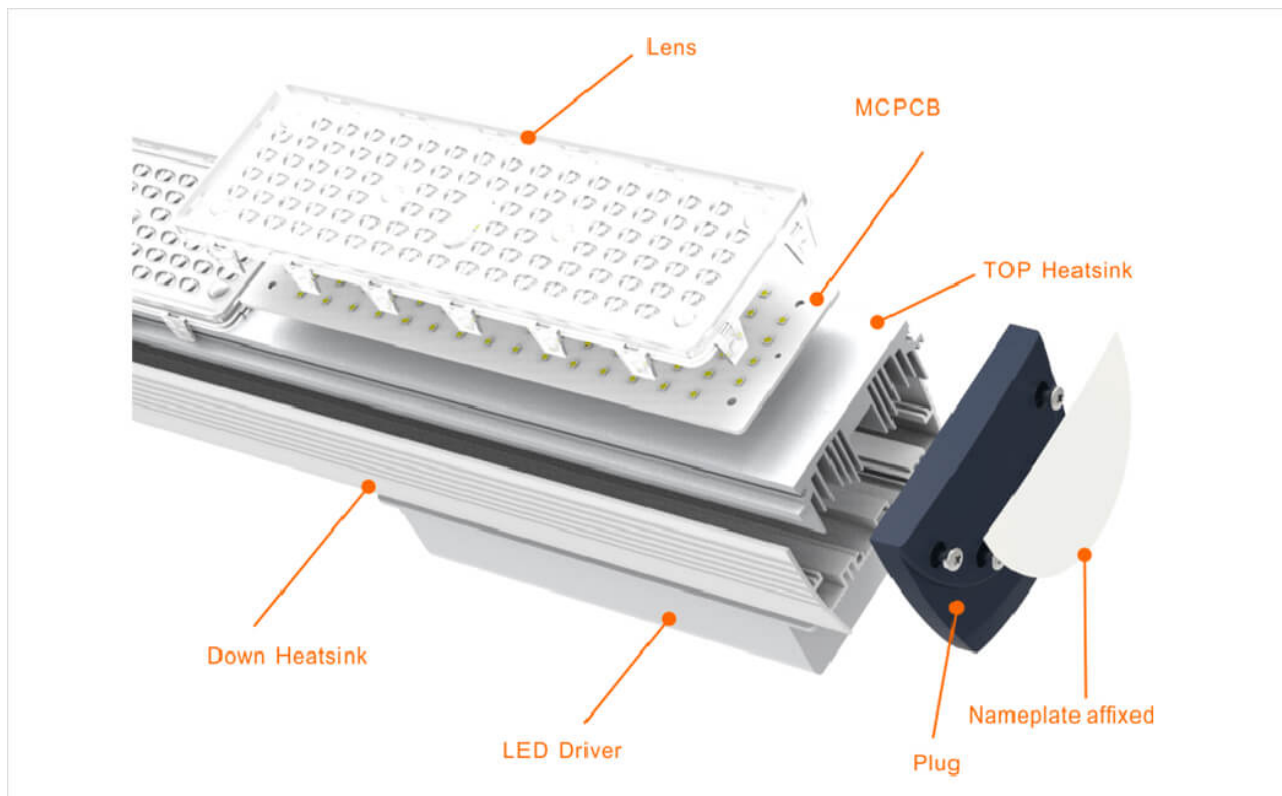
BAYLINE II

LED Industrial Linear Bay Light



Specifications	Bayline II				
	50W	100W	150W	200W	240W
Power	50W	100W	150W	200W	240W
Input Voltage	AC200-305V 50W 50/60Hz	AC200-305V 100W 50/60Hz	AC200-305V 150W 50/60Hz	AC200-305V 200W 50/60Hz	AC200-305V 240W 50/60Hz
Output Voltage	DC40-45V				
Color temperature	2800-3200 / 4000-4500 / 5500-6000K				
CRI(Ra)	Ra>70 & Ra>80				
Average Beam angle(50%)	90°/30X70°/40X100°				
Light Efficiency Luminaire	130Lm/W				
Lumen output	50W : 6.500lm	100W : 13000lm	150W : 19500lm	200W : 26000lm	240W : 31200lm
LED (Tiandian 3030)	91pcs	182pcs	273pcs	364pcs	455pcs
Driver (Meanwell)	ELG75-48A	ELG100-48A	ELG150-48A	ELG-240-48A	
UGR	20				
Power Factor(Typ)	≥0.95				
Operating Temperature	(-40~+70 °C)				
IP protection grade	IP65				
Life Span	50.000H (L70B50)				
Main Materials	Aluminum, LED, PC				
Operating Humidity	20%~95%				
Storage Temperature	(-40°C~+90 °C)				
Lumen Maintenance	>85% (5.000H)				

Additional Parameters					
Replacement value compared	50W ≥125W	100W ≥250W	150W ≥600W	200W ≥800W	240W ≥1.000W
Energy Saving	75%				
Luminance at H 5m	50W=325Lx	100W=480Lx	150W=464Lx	200W=604Lx	240W=1.622Lx
Luminance at H 10m	50W=81,25Lx	100W=120Lx	150W=116lx	200W=151lx	240W=405,5lx
Maximum temperature on housing at 25°C test environment temperature	50W=63,3°C	100W=63,2°C	150W=59,8°C	200W=66,3°C	240W=64,5°C
Maximum temperature on LED at 25°C test environment temperature	50W=72,8°C	100W=73°C	150W=75,8°C	200W=73°C	240W=73,8°C
Maximum temperature on Driver at 25°C test environment temperature	50W=62,7°C	100W=59,5°C	150W=63,3°C	200W=65,5°C	240W=65,9°C
Net weight	2,2Kg	3,2Kg	4Kg	4,7kg	5,5Kg
Gross Weight (package incl.)	22Kg/Box (6pcs)	22Kg/Box (6pcs)	18Kg/Box (4pcs)	21Kg/Box (4pcs)	25Kg/Box (4pcs)
Package Size (mm)	340x150x140	600x150x140	860x150x140	1.110x150x140	1.355x150x140





NO.1

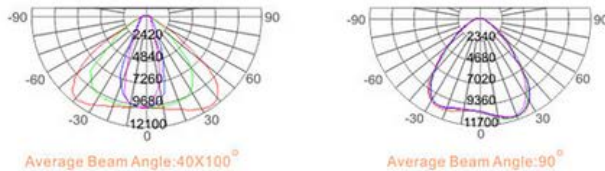
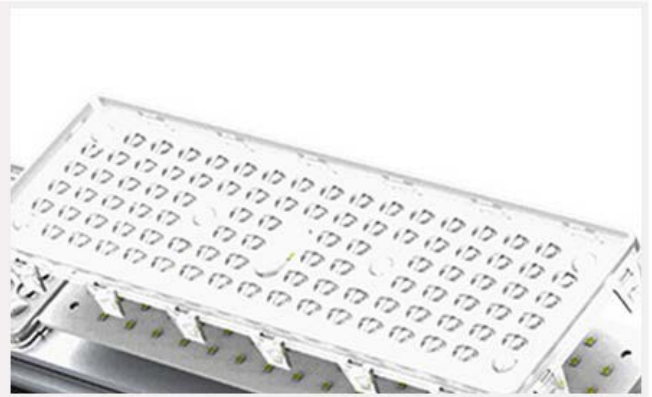
Excellent heat dissipation

Professional cooling structure, cross ventilation design, improve heat dissipation performance. With 50-240W, a total of 5 suites available for selection.

NO.2

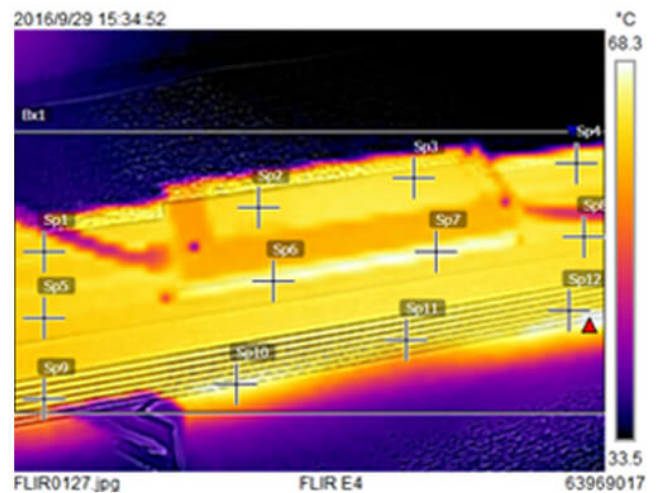
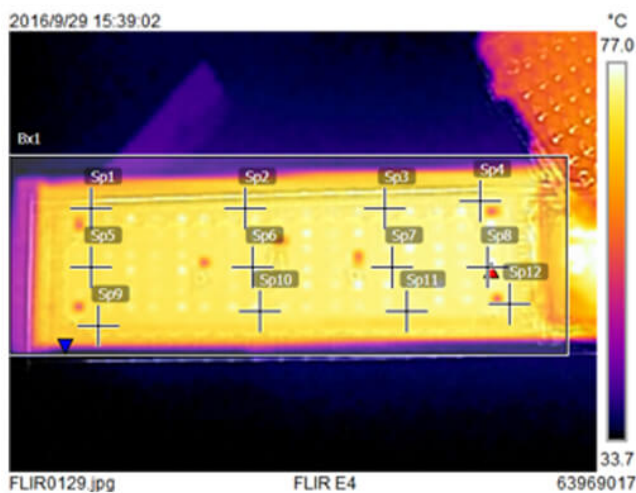
Multiple beam angle selection

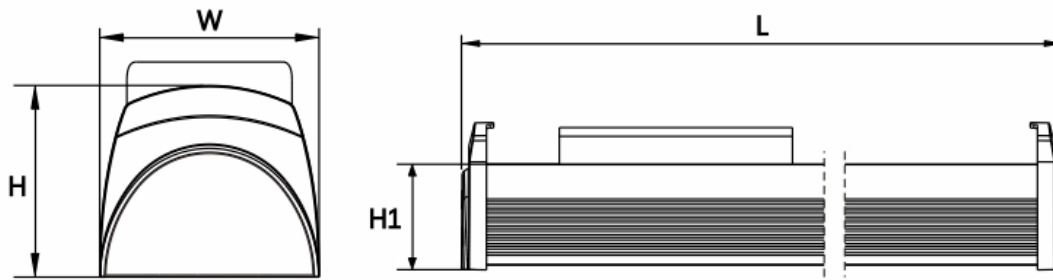
40x100 degrees and 90 degrees lenses are optional.



NO.3

The lens made of imported PC material, high transmittance, flame retardant and anti abrasion resistant UV; support 3030 beads, professional light distribution to meet different needs.





unit:mm

Model	L	W	H	H1
XJ-HBX50W-2	289	94.5	82.3	59
XJ-HBX100W-2	547	94.5	82.3	59
XJ-HBX150W-2	805	94.5	82.3	59
XJ-HBX200W-2	1063	94.5	82.3	59
XJ-HBX240W-2	1321	94.5	82.3	59



Microwave

Microwave motion sensor is innovative and active motion detectors with HF system 5.8GHz they can achieve 3-step dimming, implement daylight harvesting, has automated controls.



Agreement

DALI stand for Digital Addressable Lighting Interface and is a protocol set out in the technical standard IEC 62386.



Ad hoc network (Mesh network): Frequency hopping: Zigbee has 16 channels in 2.4G. If the current channel is interfered by other signals, it will automatically jump to other channels for communication.
 Network capacity: Zigbee network capacity is large, a network can support more than one device.
 Safety: Zigbee uses AES128 encryption. Encryption level is high.
 Short time delay and low power consumption.

