

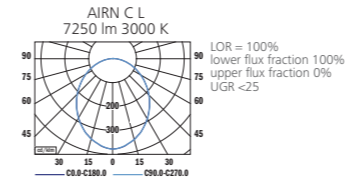
AIRN C

OPAL
LED

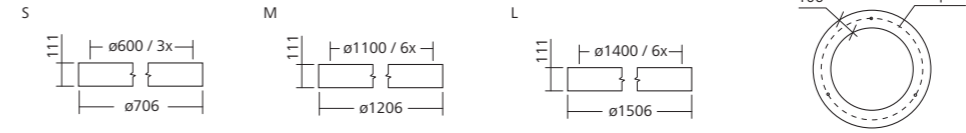
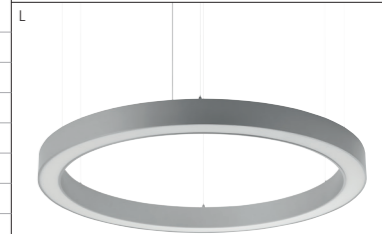
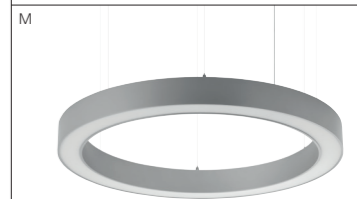
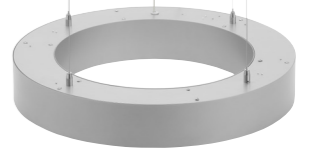


Airn C

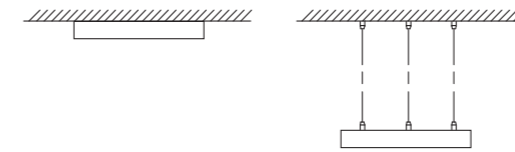
PHOTOMETRY



ARCHITECTURAL
LED LUMINAIRES

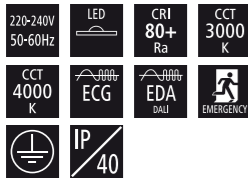


MOUNTING



TYPE	NET LUMEN OUTPUT (at Ta = 25 °C) (lm)	POWER CONSUMPTION (W)	SYSTEM EFFICACY (lm/W)	COLOUR RENDERING INDEX CRI (Ra)	CORRELATED COLOUR TEMPERATURE CCT (K)	BEAM ANGLE (C0-180, C90-270)	EMERGENCY UNIT 3H (lm)	WEIGHT (kg)
AIRN C S	3050	55	55	80+	3000	110°	120	7.8
AIRN C S	3200	55	58	80+	4000	110°	130	7.8
AIRN C M	6400	115	56	80+	3000	110°	120	14.4
AIRN C M	6700	115	58	80+	4000	110°	130	14.4
AIRN C L	7250	141	51	80+	3000	110°	120	15.6
AIRN C L	7550	141	54	80+	4000	110°	130	15.6

Luminous flux tolerance +/- 10%.



EN

Mounting
Ceiling surfaced (SFD)
Suspended (SSD)

Light source
LED

Optical system
Opal diffuser (OPD)

Wiring
Electronic control gear FIX/DALI (ECG/EDA)
Emergency unit variant (3H)
External lead-in flexible cable (SSD)

Materials
Housing: extruded aluminium
Diffuser: PMMA
Rope suspension 1,5 m (SSD)

Surface finish
Housing: elox

Service lifetime
50,000 hours/L80/B10 (ta 25°C)

Ambient temperature
From -20 °C to +35 °C
(from +5°C with EM unit)

DE

Montage
Deckenleuchte (SFD)
Hängend (SSD)

Lichtquelle
LED

Optisches System
Opal Diffusor (OPD)

Vorschaltgerät
Elektronisches Vorschaltgerät FIX/DALI (ECG/EDA)
Notbeleuchtung Variante (3H)
Externes Anschlusskabel (SSD)

Material
Körper: Extrudiertes Aluminium
Diffusor: PMMA
Seilauflhängung 1,5 m (SSD)

Oberflächenveredelung
Körper: elox

Lebensdauer
50,000 Stunden/L80/B10 (ta 25°C)

Umgebungstemperatur
Von -20 °C bis +35 °C
(von +5°C mit Notbeleuchtung)

FR

Montage
Plafonnier apparent (SFD)
Plafonnier suspendu (SSD)

Source lumineuse
LED

Système optique
Diffuseur opale (OPD)

Équipement électrique
Ballast électronique FIX/DALI (ECG/EDA)
Variante de l'unité de secours (3H)
Artère externe (SSD)

Matériels
Corps: aluminium extrudé
Diffusor: PMMA
Câble de suspension 1,5 m (SSD)

Finition de surface
Corps: elox

Durée de vie utile
50,000 heures/L80/B10 (ta 25°C)

Température ambiante
De -20 °C à +35 °C
(de +5°C avec l'unité de secours)

SK

Montáž
Prisadená (SFD)
Závesná (SSD)

Svetelný zdroj
LED

Optický systém
Opálový difúzor (OPD)

Elektrická výbava
Elektronický predradník FIX/DALI (ECG/EDA)
Varianta s núdzovou jednotkou (3H)
Prívodný napájací kábel (SSD)

Material
Téleso: extrudovaný hliník
Difúzor: PMMA
Lankový záves 1,5 m (SSD)

Povrchová úprava
Teleso: elox

Servisná životnosť
50,000 hodín/L80/B10 (ta 25°C)

Teplota okolia
Od -20 °C do +35 °C
(od +5°C s núdzovou jednotkou)

ES

Montaje
Sobrepuestas en el techo (SFD)
Suspendidas (SSD)

Fuente luminica
LED

Sistema óptico
Difusor ópalo (OPD)

Cableado
Equipo de control electrónico FIX/DALI (ECG/EDA)
Variante unidad de emergencia (3H)
Cable alimentador externo (SSD)

Material
Cuerpo: aluminio extruido
Difusor: PMMA
Cable de suspensión 1,5 m (SSD)

Tratamiento de la superficie
Cuerpo: elox

Vida útil
50,000 horas/L80/B10 (ta 25°C)

Temperatura ambiente
Desde -20 °C a +35 °C
(desde +5°C con unidad de emergencia)

IT

Installazione
A plafone (SFD)
A sospensione (SSD)

Sorgente luminosa
LED

Sistema ottico
Diffusore opale (OPD)

Cablaggio
Ballast elettronico FIX/DALI (ECG/EDA)
Variante unità di emergenza (3H)
Cavetto di alimentazione esterno (SSD)

Materiali
Corpo: estruso di alluminio
Diffusore: PMMA
Cavo di sospensione 1,5 m (SSD)

Finitura
Corpo: elox

Durata di vita
50,000 ore/L80/B10 (ta 25°C)

Temperatura d'ambiente
Da -20 °C a +35 °C
(da +5°C con unità di emergenza)

RU

Установка
Потолочная накладная (SFD)
Подвесная (SSD)

Источник света
LED

Оптическая система
Матовый рассеиватель (OPD)

Электрическое оснащение
Электронный аппарат FIX/DALI (ECG/EDA)
Блок аварийного освещения (3H)
Внешний свинца в гибком кабеле (SSD)

Материал
Корпус: экструдированный алюминий
Рассеиватель: полиметилметакрилат
Тросовый подвес 1,5 м (SSD)

Отделка поверхности
Корпус: эпоксид

Срок службы
50,000 часов/L80/B10 (ta 25°C)

Температура окружающей среды
От -20 °C до +35 °C
(от +5°C с аварийного освещения)