



Office



School



Hospital



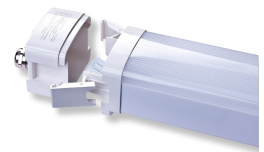
Retail



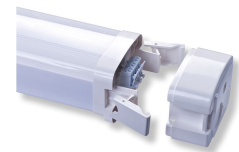
Supermarket



Congres



Internal throughwiring



Easy connection

LUMINAIRE

Model	Gtin	Dimension	Power	Lumen	Efficacy	CRI	UGR	CCT	Life Times
LU-L600-S	8720261832005	630-83-70mm	17W	1870 lm	110 lm/w	82	23	3000K (4000K 5000K)	50000hrs L70B20
LU-L600-D	8720261830636	630-83-70mm	17W	2380 lm	140 lm/w	82	26	3000K (4000K 5000K)	50000hrs L80B20
LU-L900-S	8720261830162	930-83-70mm	22W	2420 lm	110 lm/w	82	23	3000K (4000K 5000K)	50000hrs L70B20
LU-L900-D	8720261833101	930-83-70mm	22W	3080 lm	140 lm/w	82	26	3000K (4000K 5000K)	50000hrs L80B20
LU-L1200-S	8720261830773	1230-83-70mm	33W	3630 lm	110 lm/w	82	23	3000K (4000K 5000K)	50000hrs L70B20
LU-L1200-D	8720261832838	1230-83-70mm	33W	4620 lm	140 lm/w	82	25	3000K (4000K 5000K)	50000hrs L80B20
LU-L1500-S	8720261830841	1530-83-70mm	44W	4840 lm	110 lm/w	82	25	3000K (4000K 5000K)	50000hrs L70B20
LU-L1500-D	8720261830759	1530-83-70mm	44W	6160 lm	140 lm/w	82	26	3000K (4000K 5000K)	50000hrs L80B20



LUMINAIRE + SENSOR

Model	Mounting Height	Detection Range	Parameters / Tri-level Dimming Control			
			Hold Time	Dim off Time	Dim Level	Lux Level
LU-L600-S-MS	2.5-6M	100% 75% 50% 25%	5s	0s	0% 10% 30% 50%	2Lux
LU-L600-D-MS	2.5-6M		30s	10s		10Lux
LU-L900-S-MS	2.5-6M		1min	30s		30Lux
LU-L900-D-MS	2.5-6M		3min	1min		50Lux
LU-L1200-S-MS	2.5-6M		5min	5min		80Lux
LU-L1200-D-MS	2.5-6M		10min	10min		120Lux
LU-L1500-S-MS	2.5-6M		20min	30min		Disable
LU-L1500-D-MS	2.5-6M		30min	∞		

*HD03R IR Remote control



LUMINAIRE + EMERGENCY

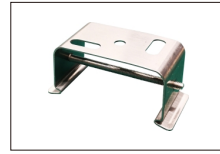
Model	Model	EM05
LU-L600-S-EM05	Emergency Power (W)	4 - 5
LU-L600-D-EM05	Emergency Light Duration (min)	> 100
LU-L900-S-EM05	Charging Time (hrs)	> 24
LU-L900-D-EM05	Output Voltage (V)	20 - 80 DC
LU-L1200-S-EM05	Input Voltage (V)	220
LU-L1200-D-EM05	Certification	CE
LU-L1500-S-EM05	Certification Standard	EN 61347-2-7:2012 EN 61347-1:2015
LU-L1500-D-EM05	Battery Warranty	2 years



*Automatical self test, monthly test and annual test function

ACCESSORIES

Model	Item Description
LU-LLA-K-SMK	Surface Mounted Kits A
LU-LLA-K-SKA	Suspension Kits A
LU-LLA-K-SKB	Suspension Kits B
LU-LLA-K-SKC	Suspension Kits C



PACKAGING INFORMATION

Model	Box 1 Item		Units per Masterbox	Masterbox	
	Dimension (mm) (HxWxD)	Weight (kg)		Dimension (mm) (HxWxD)	Weight (kg)
LU-L600-S	700*90*75	1.22	9	710*280*250	11.0
LU-L600-D	700*90*75	1.22	9	710*280*250	11.0
LU-L900-S	1000*90*75	1.67	9	1010*280*250	15.0
LU-L900-D	1000*90*75	1.67	9	1010*280*250	15.0
LU-L1200-S	1300*90*75	2.22	9	1310*280*250	20.0
LU-L1200-D	1300*90*75	2.22	9	1310*280*250	20.0
LU-L1500-S	1600*90*75	3.67	9	1610*280*250	33.0
LU-L1500-D	1600*90*75	3.67	9	1610*280*250	33.0

TECHNICAL SPECIFICATIONS

Technical Specifications

UGR	23 / 25 /26
Dimmable	No
IP	IP20
IK	IK02
Blue Hazard	0%

Electrical Supply

Frequency(Hz)	50/60
Voltage (V)	220-240
AC/DC	AC
Power Factor	0.95

Certifications

Fixture certifications	CE/GS/ENEC
Test Reports	LM79

Optional

Drivers	Dali2/Daylight/Active
---------	-----------------------

Mechanical Properties

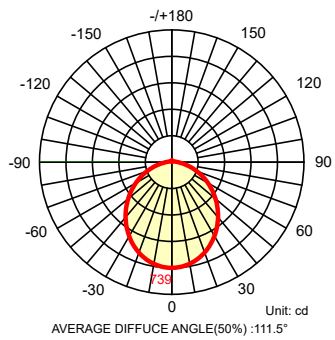
Housing Material	Plastic
Color (Housing)	White
Optic	Lens

Application

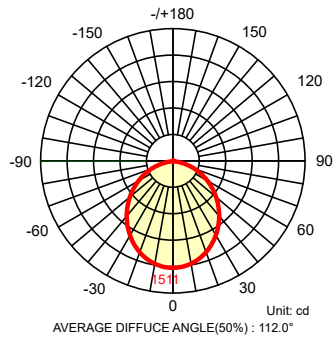
Operating temperature	-10 - +40°C
-----------------------	-------------

PHOTOMETRIC SPECIFICATIONS

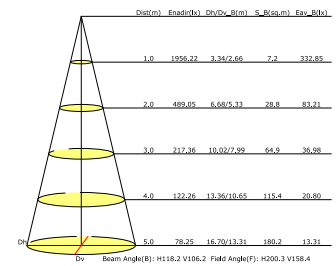
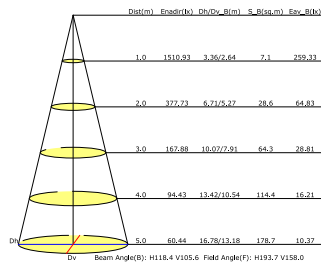
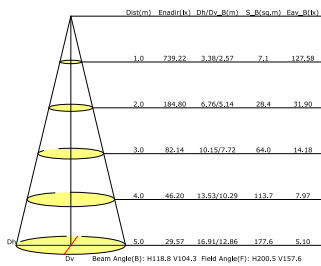
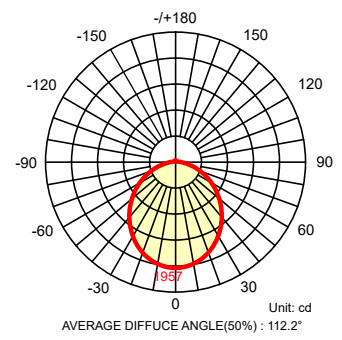
LU-L600-D



LU-L1200-D



LU-L1500-D



SPECIFICATION DRIVER

Driver Specifications

Voltage (V)	220-240
Power (W)	20-75
Power Factor	0.95
Flickering	No

Optional

CC MODE
DALI
TOUCH