

ULTRABAY XL

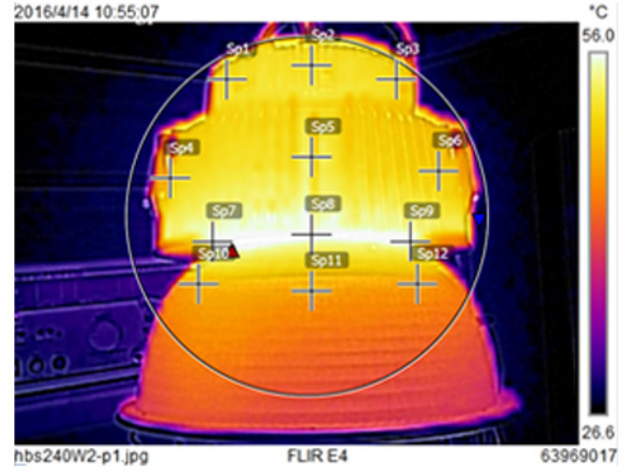
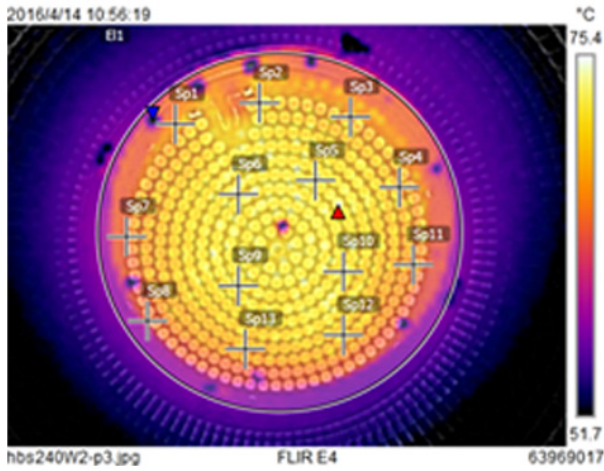
LED Industrial High Bay Light



Specifications			
Power	80W/100W	130W/150W	200W/240W
Input Voltage	AC90-305V 50/60Hz		
Output Voltage	DC45-47V		
Color temperature	2800-3200 / 4000-4500 / 5500-6000K		
CRI(Ra)	Ra>70 & Ra>80		
Average Beam angle(50%)	25°/45°/60°/90°/120°		
Light Efficiency Luminair	140-150Lm/W	140-150Lm/W	140-150Lm/W
Lumen output	80W: 11600Lm	130W: 18850Lm	200W: 29000Lm
	100W: 14500Lm	150W: 21750Lm	240W: 34800Lm
LED (Tiandian 3030)	140pcs	231pcs	364pcs
Driver (Meanwell)	HBG-100-48A/B	HBG-150-48A/B	HBG-240-48A/B
UGR	<20		
Power Factor(Typ)	≥0.95		
Operating Temperature	(-40~+70 °C)		
IP protection grade	IP65		
Life Span	50.000H (L70B50)		
Main Materials	Aluminum, LED, Plastic		
Operating Humidity	20%~90%		
Storage Temperature	(-40°C~+80 °C)		
Lumen Maintenance	>85% 5.000Hrs		

Additional Parameters			
Replacement value compared to traditional lightsource (HPS ,MH, HID)	80W ≥200W 100W ≥250W	130W ≥400W 150W ≥600W	200W ≥800W 240W ≥1000W
Energy Saving	60%	75%	76%
Luminance at H 5m	80W = 253,07Lx 100W = 357,14Lx	130W = 437,23Lx 150W = 488,79Lx	200W = 632,94Lx 240W = 759,2Lx
Luminance at H 10m	80W = 63,27Lx 100W=89,29Lx	130W =109,31Lx 150W = 122,2Lx	200W = 158,24Lx 240W = 189,79Lx
Maximum temperature on housing at 25°C test environment temperature	80W = 51,7 °C 100W = 53,7°C	130W = 57,9 °C 150W = 60,4 °C	200W = 62,3 °C 240W = 67,5 °C
Maximum temperature on LED at 25°C test environment temperature	80W = 63,8 °C 100W =65,8 °C	130W = 73,4 °C 150W = 78,5 °C	200W = 78,5°C 240W = 80,2 °C
Maximum temperature on Driver at 25°C test environment temperature	80W = 51.4 °C 100W = 52.4°C	130W = 54,8 °C 150W = 58,2 °C	200W = 60,6 °C 240W = 62,3 °C
Net weight	5,2Kg	5,2Kg	6,0Kg
Gross Weight (package incl.)	7,7Kg	7,7Kg	8,5Kg
Package Size (mm)	410x410x430	410x410x430	410x410x430
Installation accessories	Adjustable bracket, Hook		





Microwave motion sensor is innovative and active motion detectors with HF system 5.8GHz. they can achieve 3-step dimming. implement daylight harvesting, has automated controls.

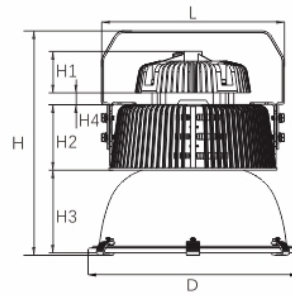


DALI stand for Digital Addressable Lighting Interface and is a protocol set out in the technical standard IEC 62386.



Ad hoc network (Mesh network): Frequency hopping: Zigbee has 16 channels in 2.4G. If the current channel is interfered by other signals, it will automatically jump to other channels for communication.
Network capacity: Zigbee network capacity is large, a network can support more than one device.
Safety: Zigbee uses AES128 encryption. Encryption level is high.
Short time delay and low power consumption.





unit:mm

Model	D	H	H1	H2	H3	H4	L
XJ-HBS80W-2	∅ 350	349.4	52.5	109	138	17.5	260
XJ-HBS100W-2	∅ 350	349.4	52.5	109	138	17.5	260
XJ-HBS130W-2	∅ 350	349.4	52.5	109	138	17.5	260
XJ-HBS150W-2	∅ 350	349.4	52.5	109	138	17.5	260
XJ-HBS200W-2	∅ 350	373.9	52.5	109	138	17.5	304.8
XJ-HBS240W-2	∅ 350	373.9	52.5	109	138	17.5	304.8